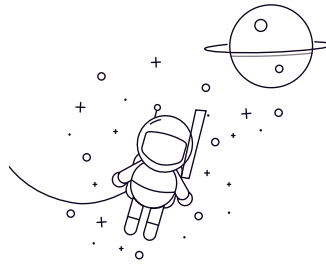


SIJ...



wählen Anfrage	Bearing number	Abmessung (mm)															load rating kN		Gewicht kg
		D	B	dk	C1 max	d2	G	h1	l3 min	l4	l5	W	d3	d4	rs min	a°	dynamic load	static load	
SIJ20	20	25	34.925	18	46	M20xl.5	77	40	100	10	30	27.5	34	0.6	14	23	30	0.314	
SIJ22	22	28	38.1	20	50	M22X1.5	84	43	109	12	32	30	37	0.6	15	27.5	35.5	0.41	
SIJ18	18	23	31.75	17	42	M18xl.5	71	36	92	10	27	25	31	0.6	14	20	25.5	0.246	
SIJ5	5	8	11.112	7	16	M5	27	12.5	35	4	10	9	12	0.3	7	2.3	5.9	0.016	
SIJ6	6	9	12.7	7	18	M6	30	13.5	39	5	11	10	13	0.3	11	3.2	6.5	0.02	
SIJ8	8	12	15.875	9	22	M8	36	16	47	5	14	12.5	16	0.3	14	5.3	8	0.037	
SIJ10	10	14	19.05	11	26	M10	43	19.5	56	6.5	17	15	19	0.3	12	7.3	10.5	0.061	
SIJ12	12	16	22.225	12	30	M12	50	24	65	6.5	19	17.5	22	0.3	13	8.5	13	0.089	
SIJ14	14	19	25.4	14	34	M14	57	27	74	8	22	20	25	0.3	14	12	17	0.135	
SIJ16	16	21	28.575	15	38	M16	64	33	83	8	22	22	27	0.3	15	16.5	21	0.171	