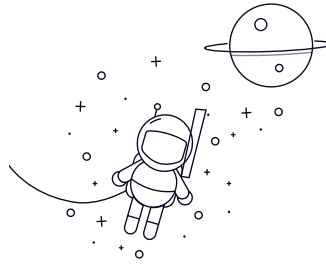


# SAJ...



wählen Anfrage	Anfrage	Bearing number	Abmessung (mm)											load rating kN		Gewicht kg
			D	B	d <sub>k</sub>	C1 max	d <sub>2</sub>	G	h	l <sub>1</sub> min	l <sub>2</sub>	rs min	a°	dynamic load	static load	
SAJ5	5	8	11.112	7	16	M5	33	20	41	0.3	7	2.3	2.5	0.011		
SAJ6	6	9	12.7	7	18	M6	36	22	45	0.3	11	3.2	4	0.015		
SAJ8	8	12	15.875	9	22	M8	42	25	53	0.3	14	5.3	7.5	0.03		
SAJ10	10	14	19.05	11	26	M10	48	29	61	0.3	12	7.3	10.5	0.048		
SAJ12	12	16	22.225	12	30	M12	54	33	69	0.3	13	8.5	13	0.076		
SAJ14	14	19	25.4	14	34	M14	60	36	77	0.3	14	12	17	0.115		
SAJ16	16	21	28.575	15	38	M16	66	40	85	0.3	15	16.5	21	0.159		
SAJ18	18	23	31.75	17	42	M18x1.5	72	44	93	0.6	14	20	25.5	0.222		
SAJ20	20	25	34.925	18	46	M20x1.5	78	47	101	0.6	14	23	30	0.292		
SAJ22	22	28	38.1	20	50	M22x1.5	84	51	109	0.6	15	27.5	35.5	0.381		