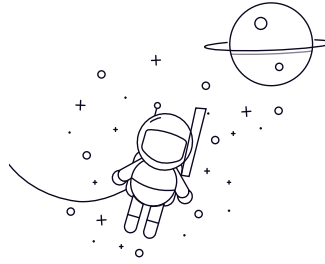


SI...E,ES



wählen	Anfrage	Bearing number	Abmessung (mm)																load rating kN		Gewicht kg
			D	B	dk	C1 max	d2	G 6H	h1	l3 min	l4	l5	l7	W	d3	d4	rs min	a°	dynamic load	static load	
SI60ES	60	44	80	39	135	M52x3	175	70	242.5	20	68.5	80	70	88	1	6	245	450	5.6		
SI45ES	45	32	60	28	102	M42x3	145	65	196	20	52	65	58	70	0.6	7	127	240	2.7		
SI40ES	40	28	53	24	92	M39x3	142	65	188	18	47	60	52	65	0.6	7	99	180	2.1		
SI35ES	35	25	47	22	82	M36x3	125	60	166	15	40	55	48	58	0.6	6	79	146	1.5		
SI30ES	30	22	40.7	20	73	M30x2	110	56	146.5	15	37.5	46	42	50	0.6	6	62	110	0.98		
SI25ES	25	20	35.5	18	64	M24x2	94	48	126	12	33	36	35	42	0.6	7	48	83	0.66		
SI20ES ²⁾	20	16	29	13.5	53	M20x1.5	77	40	103.5	10	25.5	30	28	34	0.3	9	30	60	0.35		
SI17ES ²⁾	17	14	25	11.5	46	M16	67	34	90	10	23	27	25	29	0.3	10	21	45	0.24		
SI15ES ²⁾	15	12	22	10.5	40	M14	61	30	81	8	21	21	21	26	0.3	8	16	36	0.16		
SI12E ¹⁾	12	10	18	8.5	34	M12	50	23	67	7	18	18	19	22	0.3	10	10	24.5	0.096		
SHOE ¹⁾	10	9	16	7.5	29	M10	43	20	57.5	6.5	15	16	16	19	0.3	12	8.1	17.6	0.065		
SI8E ¹⁾	8	8	13	6.5	24	M8	36	15	48	5	13	13	13	16	0.3	15	5.5	12.9	0.039		
SI6E ¹⁾	6	6	10	4.5	21	M6	30	11	40.5	5	11.5	11	11	13	0.3	13	3.4	8.1	0.021		
SI5E ¹⁾	5	6	10	4.5	21	M5	30	11	40.5	5	11.5	10	10	13	0.3	13	3.4	8.1	0.021		
SI50ES	50	35	66	31	112	M45x3	160	68	216	20	57	70	62	75	0.6	6	156	290	3.5		
SI70ES	70	49	92	43	160	M56x4	200	80	280	20	81	85	80	98	1	6	313	610	8.3		
SI80ES	80	55	105	48	180	M64x4	230	85	320	25	91	95	95	110	1	6	400	750	13		