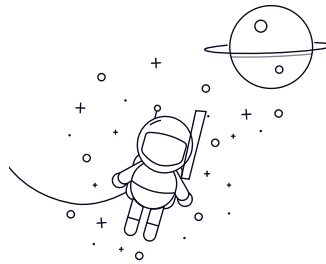


GACZ..S



wählen	Anfrage	Bearing number	Overall dimension [mm]										Rated load [kN]		Gewicht kg
			D	D	B	C	T	dk	S	A	rsr _{1s} max	a°	live load	Static load	
GACZ12S	12.7	22.225	6.86	4.83	7.62	18.26	1.3	2.39	0.51	7	6	18	0.013		
GACZ12S	0.5	0.875	0.27	0.19	0.3	0.719	0.051	0.094	0.02	7	6	18	0.013		
GACZ15S	15.875	26.988	8.64	6.35	9.4	22.83	1.48	2.77	0.76	6	10	31	0.025		
GACZ15S	0.625	1.0625	0.34	0.25	0.37	0.899	0.058	0.109	0.03	6	10	31	0.025		
GACZ19S	19.05	31.75	10.41	7.87	11.18	27.43	1.79	3.18	1	6	16	47	0.038		
GACZ19S	0.75	1.25	0.41	0.31	0.44	1.08	0.07	0.125	0.04	6	16	47	0.038		
GACZ22S	22.225	36.512	12.19	9.65	13.21	31.95	2.02	4.37	2	5.5	22	66	0.049		
GACZ22S	0.875	1.4375	0.48	0.38	0.52	1.258	0.08	0.172	0.08	5.5	22	66	0.049		
GACZ25S	25.4	41.275	13.97	11.18	15.24	36.5	2.54	5.16	2	6	29	87	0.085		
GACZ25S	1	1.625	0.55	0.44	0.6	1.437	0.1	0.203	0.08	6	29	87	0.085		
GACZ31S	31.75	50.8	17.78	13.97	18.8	45.59	3.36	5.94	2	6	47	142	0.159		
GACZ31S	1.25	2	0.7	0.55	0.74	1.795	0.132	0.234	0.08	6	47	142	0.159		
GACZ34S	34.925	55.562	19.56	15.24	21.34	49.2	3.69	7.14	2.54	4	53	159	0.213		
GACZ34S	1375	2.1875	0.77	0.6	0.84	1.937	0.145	0.281	0.1	4	53	159	0.213		
GACZ38S	38.1	61.912	21.34	16.76	23.11	54.74	3.93	7.92	2.54	5.5	66	197	0.301		
GACZ38S	1.5	2.4375	0.84	0.66	0.91	2.155	0.155	0.312	0.1	5.5	66	197	0.301		
GACZ44S	44.45	71.438	24.89	20.07	27.18	63.88	4.72	8.33	2.54	6	91	273	0.458		
GACZ44S	1.75	2.8125	0.98	0.79	1.07	2.515	0.186	0.328	0.1	6	91	273	0.458		
GACZ50S	50.8	80.962	28.7	23.37	31.24	73.02	5.51	9.52	3.56	5.5	122	365	0.671		
GACZ50S	2	3.1875	1.13	0.92	1.23	2.875	0.217	0.375	0.14	5.5	122	365	0.671		
GACZ57S	57.15	90.488	32.26	26.67	35.31	82.17	6.18	11.51	3.56	5.5	155	466	0.948		
GACZ57S	2.25	3.5625	1.27	1.05	1.39	3.235	0.243	0.453	0.14	5.5	155	466	0.948		
GACZ63S	63.5	100.013	36.07	29.97	39.12	91.19	6.79	12.7	3.56	5	196	589	1.13		
GACZ63S	2.5	3.9375	1.42	1.18	1.54	3.59	0.267	0.5	0.14	5	196	589	1.13		
GACZ69S	69.85	111.125	39.62	32.38	43.18	100.33	7.46	13.08	4.6	5	231	694	1.75		
GACZ69S	2.75	4.375	1.56	1.275	1.7	3.95	0.294	0.515	0.18	5	231	694	1.75		
GACZ76S	76.2	120.65	43.43	35.69	47.24	109.52	8.17	14.68	4.6	5	279	838	2.28		

GACZ..S

GACZ76S	3	4.75	1.71	1.405	1.86	4.312	0.322	0.578	0.18	5	279	838	2.28
GACZ82S	82.55	130.175	47.24	39.24	51.56	118.74	9.04	16.66	4.6	5	332	995	2.89
GACZ82S	3.25	5.125	1.86	1.545	2.03	4.675	0.356	0.656	0.18	5	332	995	2.89