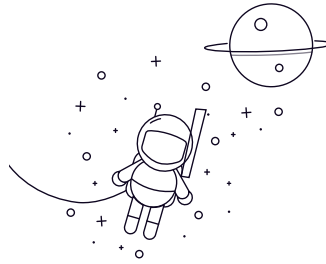


## N2300 Series



wählen	Anfrage	Designation	Principal Dimensions(mm)						Basic Load Ratings(KN)		Limited Speed(rpm)	Gewicht (kg)
			D	D	B	rs	min	rs	lmin	Dynamic(Cr)	Static(Cor)	
N2308	40	90	33	1.5	1.5	82.5	88	7000	8200	0.932		
N2309	45	100	36	1.5	1.5	99	104	6300	7400	1.24		
N2310	50	110	40	2	2	121	131	5700	6700	1.67		
N2311	55	120	43	2	2	148	162	5200	6100	2.13		
N2312	60	130	46	2.1	2.1	169	188	4800	5700	2.66		
N2313	65	140	48	2.1	2.1	188	212	4400	5200	3.2		
N2314	70	150	51	2.1	2.1	223	262	4100	4800	3.9		
N2315	75	160	55	2.1	2.1	258	300	3800	4500	4.77		
N2316	80	170	58	2.1	2.1	274	330	3600	4200	5.67		
N2317	85	180	60	3	3	315	380	3400	4000	6.57		
N2318	90	190	64	3	3	325	395	3200	3800	7.79		
N2319	95	200	67	3	3	370	460	3000	3500	9.02		
N2320	100	215	73	3	3	410	505	2900	3400	11.5		
N2322	110	240	80	3	3	605	790	2600	3100	16.8		
N2324	120	260	86	3	3	710	920	2400	2800	21.1		
N2326	130	280	93	4	4	840	1130	2200	2600	26.4		
N2328	140	300	102	4	4	920	1250	2000	2300	33.1		
N2330	150	320	108	4	4	1020	1400	1900	2200	39.8		