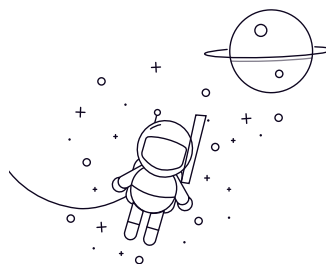


6800 Series



| wählen Anfrage NEIN. | | | Größe | | | | | | | | | | Nennlast (N) | | Gewicht (kg) |
|----------------------|----|--------|-------|--------|------|--------|-------------|--------|-----------------|-------|---------|-------|--------------|-----|--------------|
| | | | D | | D | | Offener Typ | | Geschirmter Typ | | Anfasen | | Cr | Kor | |
| | | mm | Zoll | mm | Zoll | mm | Zoll | mm | Zoll | mm | Zoll | mm | | | Zoll |
| 683 | 3 | 0.1181 | 7 | 0.2756 | 2 | 0.0787 | 3 | 0.1181 | 0.1 | 0.004 | 420 | 135 | 0.001 | | |
| 684 | 4 | 0.1575 | 9 | 0.3543 | 2.5 | 0.0984 | 4 | 0.1575 | 0.1 | 0.004 | 480 | 170 | 0.001 | | |
| 685 | 5 | 0.1969 | 11 | 0.4331 | 3 | 0.1181 | 5 | 0.1969 | 0.15 | 0.006 | 770 | 320 | 0.0019 | | |
| 686 | 6 | 0.2362 | 13 | 0.5118 | 3.5 | 0.1378 | 5 | 0.1969 | 0.15 | 0.006 | 1080 | 440 | 0.0027 | | |
| 687 | 7 | 0.2756 | 14 | 0.5512 | 3.5 | 0.1378 | 5 | 0.1969 | 0.15 | 0.006 | 1170 | 510 | 0.003 | | |
| 688 | 8 | 0.315 | 16 | 0.6299 | 4 | 0.1575 | 5 | 0.1969 | 0.2 | 0.008 | 1250 | 590 | 0.0038 | | |
| 689 | 9 | 0.3543 | 17 | 0.6693 | 4 | 0.1575 | 5 | 0.1969 | 0.2 | 0.008 | 1330 | 660 | 0.044 | | |
| 6800 | 10 | 0.3937 | 19 | 0.748 | 5 | 0.1969 | 5 | 0.1969 | 0.3 | 0.012 | 1590 | 750 | 0.005 | | |
| 6801 | 12 | 0.4724 | 21 | 0.8268 | 5 | 0.1969 | 5 | 0.1969 | 0.3 | 0.012 | 1910 | 1040 | 0.006 | | |
| 6802 | 15 | 0.5906 | 24 | 0.9449 | 5 | 0.1969 | 5 | 0.1969 | 0.3 | 0.012 | 2070 | 1250 | 0.007 | | |
| 6803 | 17 | 0.6693 | 26 | 1.0236 | 5 | 0.1969 | 5 | 0.1969 | 0.3 | 0.012 | 2130 | 1360 | 0.008 | | |
| 6804 | 20 | 0.7874 | 32 | 1.2598 | 7 | 0.2756 | 7 | 0.2756 | 0.3 | 0.012 | 3480 | 2230 | 0.019 | | |
| 6805 | 25 | 0.9843 | 37 | 1.4567 | 7 | 0.2756 | 7 | 0.2756 | 0.3 | 0.012 | 3680 | 2630 | 0.022 | | |
| 6806 | 30 | 1.1811 | 42 | 1.6535 | 7 | 0.2756 | 7 | 0.2756 | 0.3 | 0.012 | 4000 | 3150 | 0.026 | | |
| 6807 | 35 | 1.378 | 47 | 1.8504 | 7 | 0.2756 | 7 | 0.2756 | 0.3 | 0.012 | 4270 | 3600 | 0.029 | | |
| 6808 | 40 | 1.5748 | 52 | 2.0472 | 7 | 0.2756 | 7 | 0.2756 | 0.3 | 0.012 | 4410 | 3890 | 0.033 | | |
| 6809 | 45 | 1.7717 | 58 | 2.2835 | 7 | 0.2756 | 7 | 0.2756 | 0.3 | 0.012 | 4590 | 4330 | 0.04 | | |
| 6810 | 50 | 1.9685 | 65 | 2.5591 | 7 | 0.2756 | 7 | 0.2756 | 0.3 | 0.012 | 6610 | 6080 | 0.052 | | |
| 6811 | 55 | 2.1654 | 72 | 2.3846 | 9 | 0.3543 | 9 | 0.3543 | 0.3 | 0.012 | 8530 | 8080 | 0.083 | | |
| 6812 | 60 | 2.3622 | 78 | 3.0709 | 10 | 0.3937 | 10 | 0.3937 | 0.3 | 0.012 | 9200 | 8760 | 0.106 | | |
| 6813 | 65 | 2.5591 | 85 | 3.3465 | 10 | 0.3937 | 10 | 0.3937 | 0.6 | 0.024 | 10510 | 9420 | 0.125 | | |
| 6814 | 70 | 2.7559 | 90 | 3.5433 | 10 | 0.3937 | 10 | 0.3937 | 0.6 | 0.024 | 10890 | 10090 | 0.135 | | |
| 6815 | 75 | 2.9528 | 95 | 3.7402 | 10 | 0.3937 | 10 | 0.3937 | 0.6 | 0.024 | 11230 | 10760 | 0.145 | | |
| 6816 | 80 | 3.1496 | 100 | 3.937 | 10 | 0.3937 | 10 | 0.3937 | 0.6 | 0.024 | 11320 | 11080 | 0.155 | | |
| 6817 | 85 | 3.3465 | 110 | 4.3307 | 13 | 0.5118 | 13 | 0.5118 | 1 | 0.039 | 17599 | 18300 | 0.265 | | |
| 6818 | 90 | 3.5433 | 115 | 4.5276 | 13 | 0.5118 | 13 | 0.5118 | 1 | 0.039 | 17853 | 18961 | 0.28 | | |

6800 Series

| | | | | | | | | | | | | | |
|------|-----|--------|-----|--------|----|--------|----|--------|---|-------|-------|-------|-------|
| 6819 | 95 | 3.7402 | 120 | 4.7244 | 13 | 0.5118 | 13 | 0.5118 | 1 | 0.039 | 18089 | 19616 | 0.298 |
| 6820 | 100 | 3.937 | 125 | 4.9213 | 13 | 0.5118 | 13 | 0.5118 | 1 | 0.039 | 18340 | 20266 | 0.311 |
| 6821 | 105 | 4.1339 | 130 | 5.1181 | 13 | 0.5118 | 13 | 0.5118 | 1 | 0.039 | 18912 | 20924 | 0.325 |
| 6822 | 110 | 4.3307 | 140 | 5.5118 | 16 | 0.6299 | 16 | 0.6299 | 1 | 0.039 | 28100 | 30700 | 0.51 |