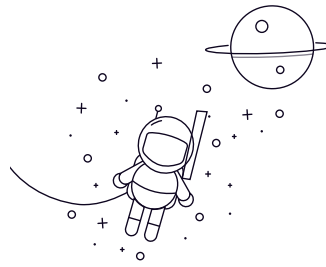
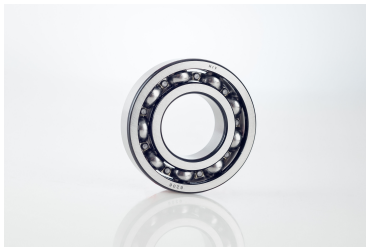


Widen Series



wählen Anfrage NEIN.			Größe								Anfasen		Nennlast (N)		Gewicht (kg)	
			D		D		B		Geschirmter Typ		rsmin (r)		Cr	Kor		
			mm	Zoll	mm	Zoll	Offener Typ	Zoll	mm	Zoll	mm	Zoll	mm	Zoll		
62000	10	0.3937	26	1.0236	10	0.3937	10	0.3937	0.3	0.012	4160	1780	0.022			
62001	12	0.4724	28	1.1024	10	0.3937	10	0.3937	0.3	0.012	5110	2380	0.026			
62002	15	0.5906	32	1.2598	11	0.4331	11	0.4331	0.3	0.012	5590	2840	0.039			
62003	17	0.6693	35	1.378	12	0.4724	12	0.4724	0.3	0.012	6000	3250	0.045			
62200	10	0.3937	30	1.1811	14	0.5512	14	0.5512	0.6	0.024	5110	2380	0.04			
62201	12	0.4724	32	1.2598	14	0.5512	14	0.5512	0.6	0.024	6180	3060	0.046			
62202	15	0.5906	35	1.378	14	0.5512	14	0.5512	0.6	0.024	7450	3700	0.056			
62203	17	0.6693	40	1.5748	16	0.6299	16	0.6299	0.6	0.024	9560	4780	0.085			
62204	20	0.7874	47	1.8504	18	0.7087	18	0.7087	1	0.039	12840	6650	0.128			
62205	25	0.9843	52	2.0472	18	0.7087	18	0.7087	1	0.039	14020	7930	0.146			
62206	30	1.1811	62	2.4409	20	0.7874	20	0.7874	1	0.039	19460	11310	0.242			
62207	35	1.378	72	2.8346	23	0.9055	23	0.9055	1.1	0.043	25670	15300	0.345			
62300	10	0.3937	35	1.378	17	0.6693	17	0.6693	0.6	0.024	7340	3470	0.06			
62301	12	0.4724	37	1.4567	17	0.6693	17	0.6693	1	0.039	9700	4190	0.074			
62302	15	0.5906	42	1.6353	17	0.6693	17	0.6693	1	0.039	11400	5430	0.11			
62303	17	0.6693	47	1.8504	19	0.748	19	0.748	1	0.039	13580	6580	0.149			
62304	20	0.7874	52	2.0472	21	0.8268	21	0.8268	1.1	0.043	15940	7880	0.197			
62305	25	0.9843	62	2.4409	24	0.9449	24	0.9449	1.1	0.043	22380	11490	0.32			
62306	30	1.1811	72	2.8346	27	1.063	27	1.063	1.1	0.043	27000	15200	0.485			
62800	10	0.3937	19	0.748	6	0.2362	6	0.2362	0.3	0.012	1590	750	0.0059			
62803	17	0.6693	26	1.0236	6	0.2362	6	0.2362	0.3	0.012	2130	1360	0.0089			
62805	25	0.9843	37	1.4567	8	0.315	8	0.315	0.3	0.012	3680	2630	0.025			
63800	10	0.3937	19	0.748	7	0.2756	7	0.2756	0.3	0.012	1590	750	0.0074			
63801	12	0.4724	21	0.8268	7	0.2756	7	0.2756	0.3	0.012	1910	1040	0.0085			
63802	15	0.5906	24	0.9449	7	0.2756	7	0.2756	0.3	0.012	2070	1250	0.01			
63803	17	0.6693	26	1.0236	7	0.2756	7	0.2756	0.3	0.012	2130	1360	0.011			

Widen Series

63804	20	0.7874	32	1.2598	10	0.3937	10	0.3937	0.3	0.012	3480	2230	0.024
63204	20	0.7874	47	1.8504	20.6	0.811	20.6	0.811	1	0.039	12840	6650	0.15
63207	35	1.378	72	2.8346	27	1.063	27	1.063	1.1	0.043	25670	15300	0.435
63000	10	0.3937	26	1.0236	12	0.4724	12	0.4724	0.3	0.012	4160	1780	0.025