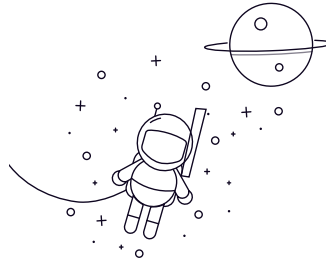


Non-standard Series



wählen	Anfrage	NEIN.	Größe										Nennlast (N)		Gewicht (kg)
			D		D		B		Anfasen		Cr	Kor			
			mm	Zoll	mm	Zoll	Offener Typ	Geschirmter Typ	rsmin (r)						
							mm	Zoll	mm	Zoll	mm	Zoll			
6201-8	12.7	0.5	32	1.2598	10	0.3937	10	0.3937	0.6	0.024	6180	3060	0.0333		
6201-10	15.875	0.625	32	1.2598	10	0.3937	10	0.3937	0.6	0.024	6180	1360	0.033		
6201-13	13	0.5118	32	1.2598	10	0.3937	10	0.3937	0.6	0.024	6180	2630	0.033		
6202-8	12.7	0.5	35	1.378	11	0.4331	11	0.4331	0.6	0.024	7450	3700	0.0475		
6202-10	15.875	0.625	35	1.378	11	0.4331	11	0.4331	0.6	0.024	7450	3700	0.042		
6202-13	13	0.5118	35	1.378	11	0.4331	11	0.4331	0.6	0.024	7450	3700	0.0472		
6202-14	14	0.5512	35	1.378	11	0.4331	11	0.4331	0.6	0.024	7450	3700	0.0465		
6202-16	16	0.6299	35	1.378	11	0.4331	11	0.4331	0.6	0.024	7450	3700	0.042		
6203-8	12.7	0.5	40	1.5748	12	0.4724	12	0.4724	0.6	0.024	9560	4780	0.073		
6203-10	15.875	0.625	40	1.5748	12	0.4724	12	0.4724	0.6	0.024	9560	4780	0.066		
6203-12	19.05	0.75	40	1.5748	12	0.4724	12	0.4724	0.6	0.024	9560	4780	0.058		
6203-13	13	0.5118	40	1.5748	12	0.4724	12	0.4724	0.6	0.024	9560	4780	0.0727		
6203-15	15	0.5906	40	1.5748	12	0.4724	12	0.4724	0.6	0.024	9560	4780	0.0665		
6203-16	16	0.6299	40	1.5748	12	0.4724	12	0.4724	0.6	0.024	9560	4780	0.066		
6204-10	15.875	0.625	47	1.8504	14	0.5512	14	0.5512	1	0.039	12840	6650	0.1115		
6204-12	19.05	0.75	47	1.8504	14	0.5512	14	0.5512	1	0.039	12840	6650	0.11		
99502H	15.875	0.625	34.93	1.375	11	0.4331	11	0.4331	0.6	0.024	7450	3700	0.042		