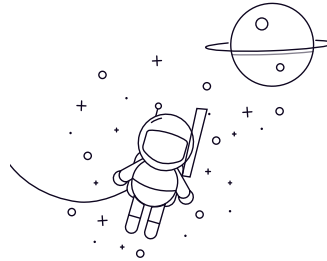


# Inch RMS Series



wählen Anfrage NEIN.			Größe								Anfasen		Nennlast (N)		Gewicht (kg)
			D		D		B		Geschirmter Typ		rsmin (r)		Cr	Kor	
			mm	Zoll	mm	Zoll	Offener Typ		Geschirmter Typ		mm	Zoll			
							mm	Zoll	mm	Zoll					
RMS4	12.7	0.5	41.28	1.625	15.875	0.625	15.875	0.625	1	0.0039	7350	4410	0.1076		
RMS5	15.875	0.625	46.04	1.8126	15.875	0.625	15.875	0.625	1	0.0039	9880	6200	0.1172		
RMS6	19.05	0.75	50.8	2	17.46	0.6874	17.46	0.6874	1	0.0039	10450	6560	0.1606		
RMS7	22.225	0.875	57.15	2.25	17.46	0.6874	17.46	0.6874	1.1	0.0043	10780	6980	0.223		
RMS8	25.4	1	63.5	2.5	19.5	0.75	19.5	0.75	1.1	0.0043	17220	11390	0.259		
RMS9	28.575	1.125	71.44	2.8126	20.64	0.8126	20.64	0.8126	1.1	0.0043	22840	15680	0.372		
RMS10	31.75	1.25	79.37	3.125	22.23	0.8752	22.23	0.8752	1.1	0.0043	26700	17570	0.542		
RMS11	34.925	1.375	88.9	3.5	22.23	0.8752	22.23	0.8752	1.5	0.059	28400	20900	0.7		
RMS12	38.1	1.5	95.25	3.75	23.81	0.9374	23.81	0.9374	1.5	0.059	31390	22380	0.8		